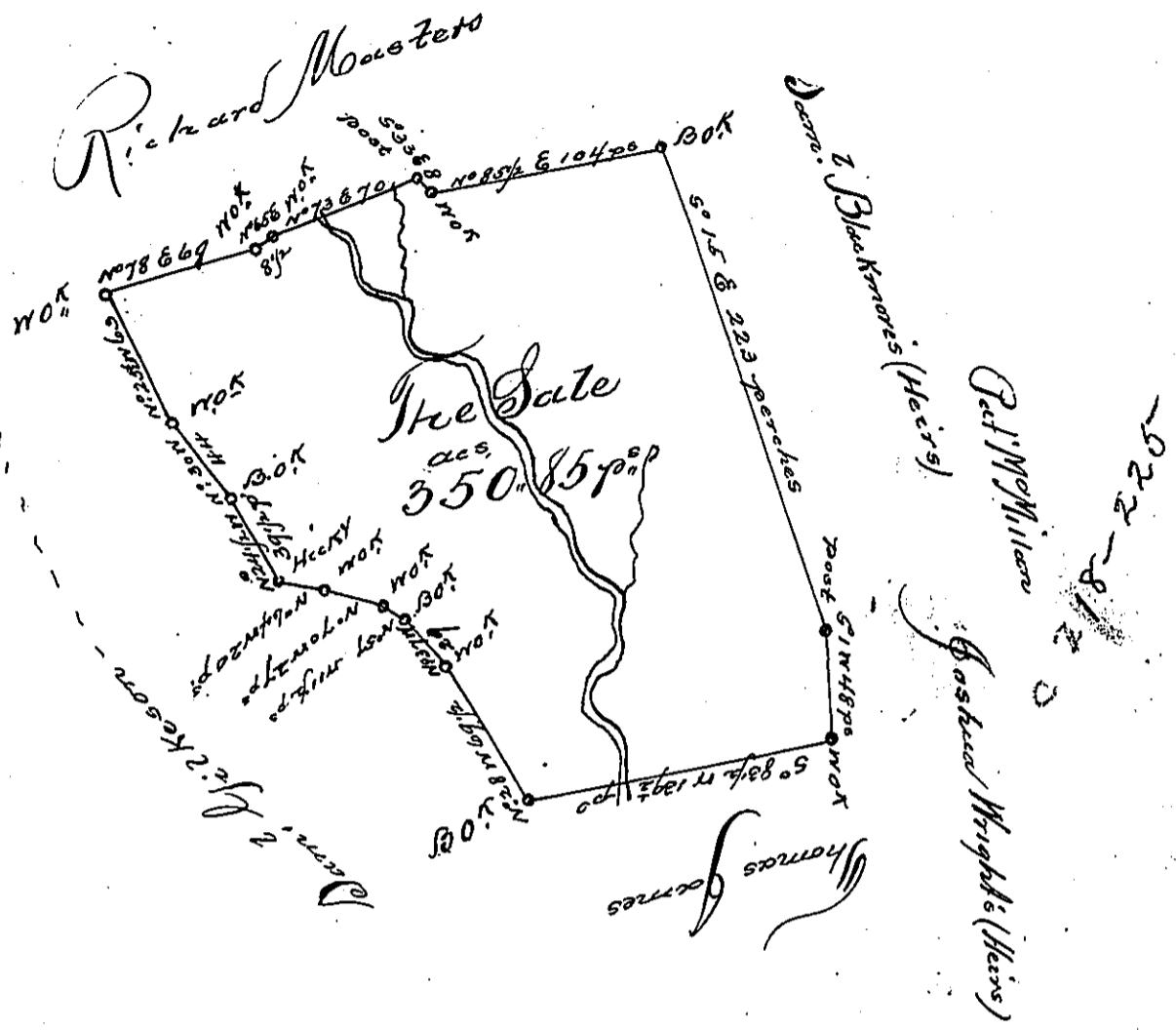


C-117-288

62
P16-217
2/157



A Draught of a Survey call'd the Dale, situate on the waters of Peters Creek in Washington County. Cont^y 350 ac^s 85 p^s, strictly measured executed March 13th 1788, in consequence of a Certificate granted to Justice Wright for 400 ac^s by the Com^{rs} appointed by the Government of Virginia and duly entered with the County Surveyor as appears by the List for Ret^d 5th Nov^r 1789
Entry dated 18th Feb^r 1780

Presley Nevill }
Mazzth Ritchie } D. J.

John Lukens Esq^r
J. L.

IN TESTIMONY that the above is a copy of the original remaining on file in the Department of Internal Affairs of Pennsylvania, made conformably to an Act of Assembly approved the 16th day of February, 1833, I have hereunto set my Hand and caused the Seal of said Department to be affixed at Harrisburg, this Seventh day of January 1902.

James W. Fatta
Secretary of Internal Affairs.